

Electric Wire Rope Hoists "MH" and "MHM" Types





WIRE ROPE ELECTRIC HOISTS

Lifting capacity from 250 kg up to 16 000 kg. More than 1 800 000 wire rope electric hoists of the well known "T" series have been sold by Balkancarpodem in over 40 countries of the world. The great experience of Balkancarpodem in the field of the materials handling equipment industry has been used in the up dating of this electric hoist series.

The new "MH" series finds wide application in different fields of economy and corresponds to FEM standards.

New "MH" type wire rope electric hoists

The "MH" series is designed on the basis of the modular principle. The various capacities, lifting heights and lifting speeds ensure wide application of the "MH" hoists. Easy and cost effective maintenance.

The wire rope electric hoists of the "MH" series are certified by TÜV and conform to the following norms:

- EG - European requirements for machines 98/37/EG of 22.06.98
- EG - European requirements for low voltage 73/23/EWG of 19.02.73
- Harmonized norm EN 292 - Protection of machines

Electric Wire Rope Hoists "MH" and "MHM" Types

SELECTION CRITERIA

To choose the right hoists the following criteria should be taken account:

1. What will be the maximum loading capacity?
2. What will be the maximum lifting height?
3. What hoisting speed is to be employed?
4. Will an auxiliary reduced lifting speed be required?

5. What will the operational conditions be?
 6. What will the travelling speed be, if required?
 7. How do you need to operate the hoists?
- The type of the hoists is to be defined in accordance with the load spectrum, the average operating time per day in hours, the loading capacity and the reeving.

SELECTION EXAMPLE

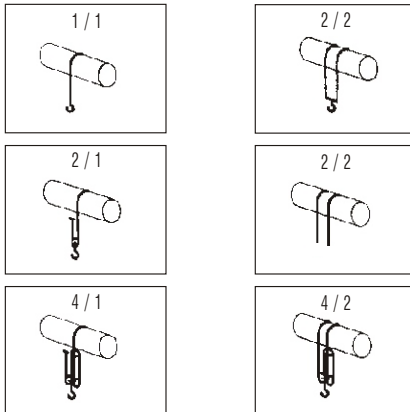
Loading capacity - **4000 kg**
 Average lifting path of the hook (H) - **5 m**
 Hoisting speed (V) - **4 m/min**
 Reeving - **4/1**
 Load spectrum - **„medium“**
 Cycles per hour (N) - **15**
 Average operating time per day (T) - **6 hours**

The average operating time per day of the hoist is to be calculated in the in the following manner:

$$T_m = \frac{2 \times H \times N \times T}{60 \times V} = \frac{2 \times 5 \times 15 \times 6}{60 \times 4} = 3.75 \text{ hours}$$

For the "medium" load spectrum and average operating time per day of 3.75 hours the group "2m" is shown in table "LOAD SPECTRUM-CLASS OF OPERATING TIME".

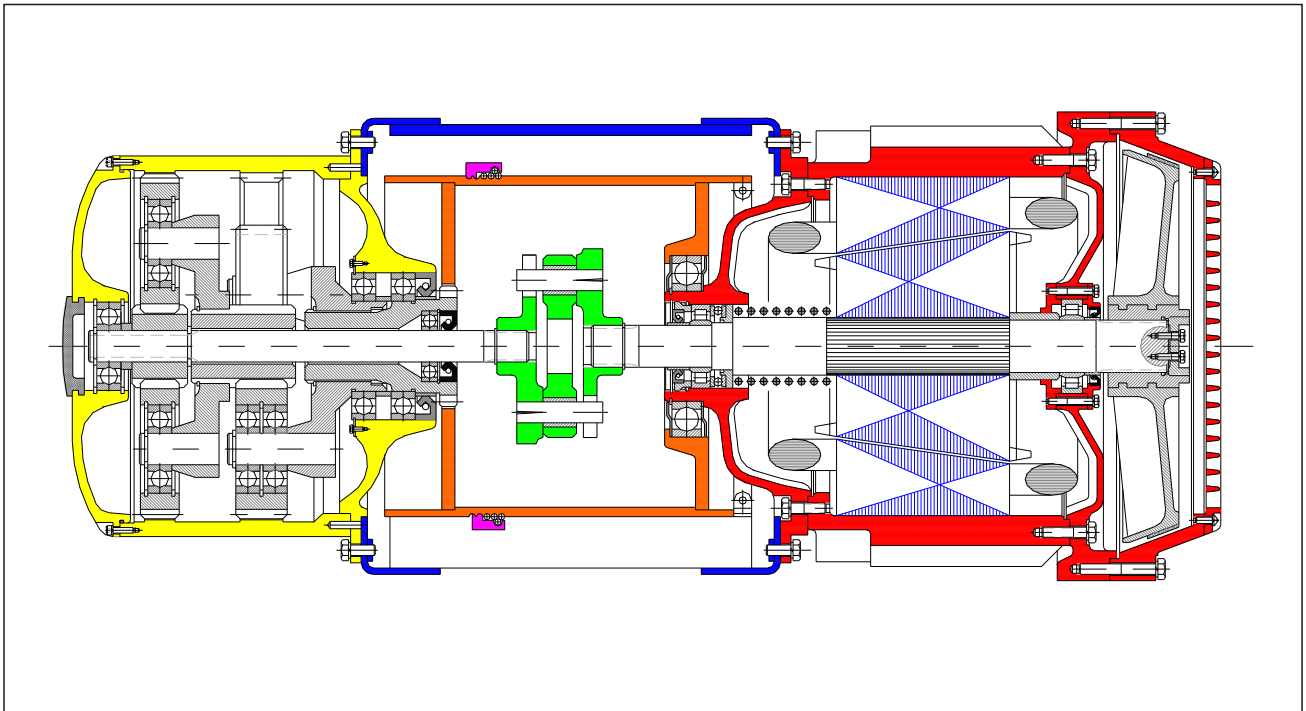
For loading capacity of 4000kg and 4/1 reeving the type of the hoist „MHM 4-10" or „MH 6-10" is shown in table "TYPE SELECTION".



Load Spectrum (Duty operation mode) DEFINITION		Class of Operating Time average operating time per day T _m in hours			
LIGHT	Mechanisms, usually subject to very small loads and in exceptional cases only to maximum loads		2 - 4	4 - 8	8 - 16
MEDIUM	Mechanisms, usually subject to small loads but rather often to maximum loads		1 - 2	2 - 4	4 - 8
HEAVY	Mechanisms, usually subject to medium loads but frequently maximum loads		0.5 - 1	1 - 2	2 - 4
VERY HEAVY	Mechanisms, usually subject to maximum or almost maximum loads		0.25 - 0.5	0.5 - 1	1 - 2
GROUP - DIN 15 020 / FEM 9.511			1 Am	2 m	3 m

Type Selection

CAPACITY - kg			SERIES	SIZE		
REEVING						
1 / 1 2 / 2	2 / 1 4 / 2	4 / 1 -				
200	400	-	MH 2 MHM 4 MHM 5	-	-	MH 2-02 MHM 4-02 MHM 5-02
250	500	-		-	MH 2-03 MHM 4-03 MHM 5-03	-
400	800	1600	MH 3 MHM 4 MHM 5	-	-	MH 3-04 MHM 4-04 MHM 5-04
500	1000	2000		-	MH 3-05 MHM 4-05 MHM 5-05	-
800	1600	3200	MHM 4	-	-	MHM 4-08 MH 6-08
1000	2000	4000	MH 6	-	MHM 4-10 MH 6-10	-
1250	2500	5000	MH 5	-	-	MHM 5-12 MH 6-12
1600	3200	6300	MH 6	-	MHM 5-16 MH 6-16	-
2000	4000	8000	MH 6	-	-	MH 6-20 MH 7-20
2500	5000	10000	MH 7	-	MH 6-25 MH 7-25	-
3200	6300	12500	MH 7	-	MH 7-32	-
4000	8000	16000		MH 7-40	-	-



Hoisting motor

Powerful brake motor with a built in conical brake and sliding rotor. Asbestos-free brakes. Creep speed of motor. Reliable brake operation in case of power break-down. The different combinations of motors and gear units expand the range of the available lifting speeds.

Gear unit

Two-stage heliocentric gear unit mounted to one side of the body. The high quality surface hardened gear wheels ensure: - long life - noiseless operation at high coefficient of efficiency.

Drum

Equipped with ball bearings. The effort is transferred by means of a grooved shaft.

Rope guide

New construction. No special tools are necessary for the replacement of the rope guide. Ensures precise rope winding and unwinding. Possibility for rope deviation $\pm 4^\circ$. Actuates the end limit switch for end upper and end bottom position of the hook.

Block-hook

The block-hook has entirely new construction corresponding to the modern technical safety requirements. Easy operation with minimum dead weight.

Body

The new construction of the body has rectangular shape, representing a robust welded construction as a flange connection between the motor and the gear unit. Rope's outlet in all possible directions permits the realization of different assembly versions and positions.

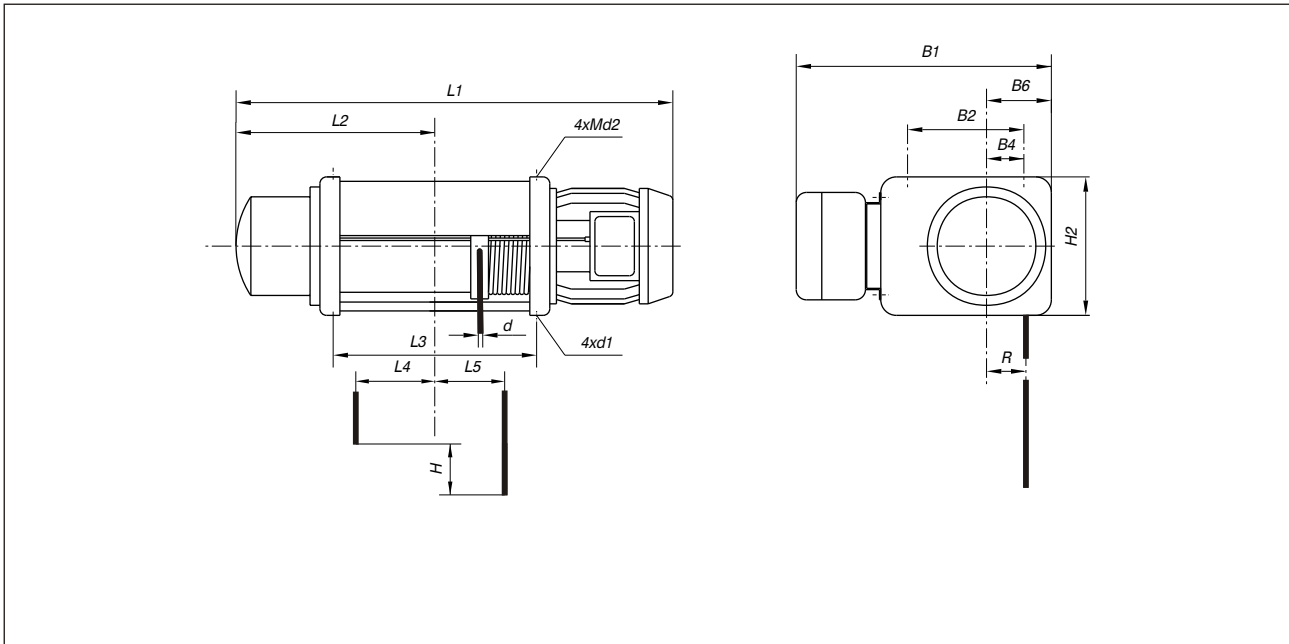
Trolleys

The trolleys are with completely new construction, connected directly to the rectangular shaped body, ensuring optimum load distribution on the travel wheels. Travel wheels driven by a brake motor and heliocentric gear unit. Increased range of traveling speeds. Stageless fitness along the width of the monorail traveling track.

Electric equipment

Terminal box representing a separate unit. Contactor control at 42V control voltage. Terminal box of the motor with a built-in end limit switch.

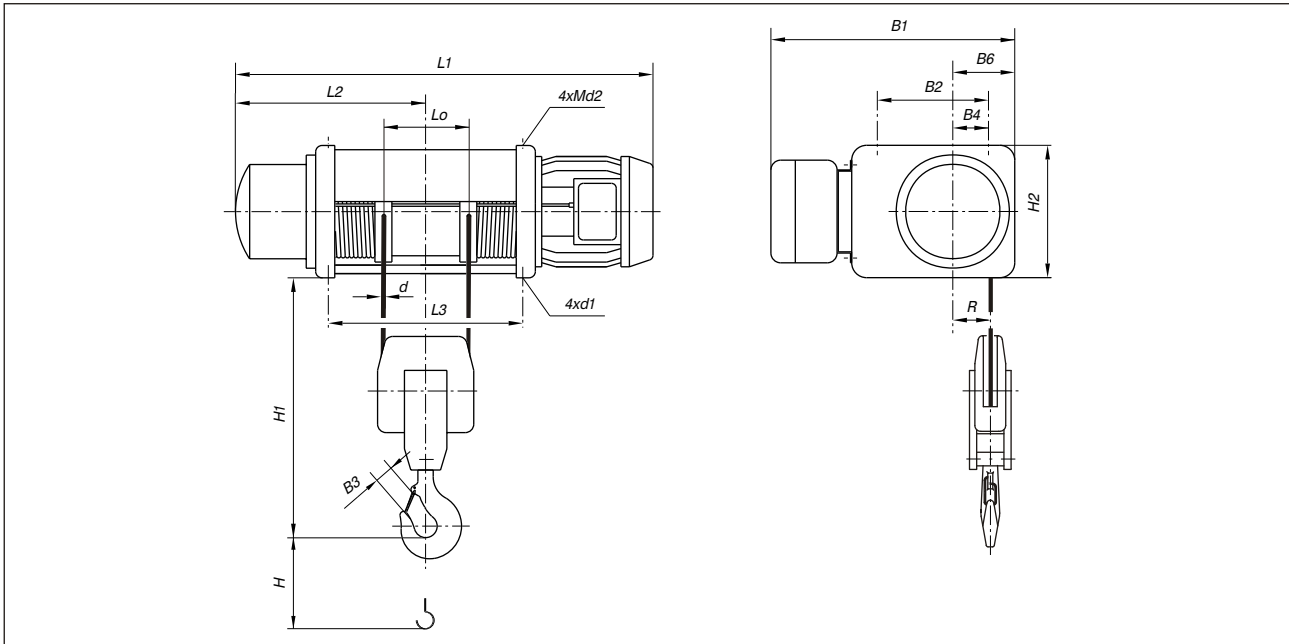
Stationary electric wire rope hoist - Reeving 1/1



Type	Capacity, kg	General dimensions, mm																	
		L1				L2	L3	L4	L5	B1	B2	B4	B6	H2	R	d	d1	d2	
		Without creep speed	with creep speed	without creep speed	with creep speed														
MH 3-05	H 1	720	760	720	760	320	224	93	77	580	295	105	159	321	90	7	15	M14	
	H 2	825	865	825	865	370	329	145	130										
	H 3	925	965	925	965	420	429	195	180										
	H 4	1125	1165	1125	1165	520	629	295	280										
	H 5	1325	1365	1325	1365	620	829	395	380										
MHM 4-05	H 5	1425	1495	1425	1495	670	841	393	377	650	325	127,5	184	366	120,5	17	M20		
MHM 5-05	H 5	1530	1615	1560	1615	715	931	438	422										
	H 6	1750	1835	1780	1835	825	1151	548	532	760	390	157	220	432	157,5	21	M24		
MHM 4-10	H 1	815	885	815	885	365	231	89	61										
	H 2	925	995	925	995	420	341	144	116										
	H 3	1025	1095	1025	1095	470	441	194	166										
	H 4	1225	1295	1225	1295	570	641	294	266										
	H 5	1425	1495	1425	1495	670	841	394	366										
MH 6-10	H 5	1540	1630	1575	1630	715	873	403	382									760	390
	H 6	1645	1735	1680	1735	770	978	456	434										
	H 7	1820	1910	1855	1910	860	1153	543	522										
MHM 5-16	H 1	860	945	890	945	380	261	102	76	650	325	127,5	184	366	123 (122)	12 (10)	17	M20	
	H 2	980	1065	1010	1065	440	381	164	136										
	H 3	1090	1175	1120	1175	495	491	219	191										
	H 4	1310	1395	1340	1395	605	711	329	301										
	H 5	1530	1615	1560	1615	715	931	439	411										
	H 6	1750	1835	1780	1835	825	1151	549	521										
MH 6-16	H 5	1540	1630	1575	1630	715	873	403	382	760	390	157	220	432	158,5 (157,5)	21	M24		
	H 6	1645	1735	1680	1735	770	978	456	434										
	H 7	1820	1910	1855	1910	860	1153	543	522										
MH 6-25	H 2	1015	1105	1050	1105	445	348	146	109	760	390	157	220	432	160 (159)	15 (13)	21	M24	
	H 3	1120	1210	1155	1210	505	453	198	162										
	H 4	1330	1420	1365	1420	610	663	303	267										
	H 5	1540	1630	1575	1630	715	873	407	372										
	H 6	1645	1735	1680	1735	770	978	461	424										
	H 7	1820	1910	1855	1910	860	1153	548	512										
		H 6	1890	1925	-	-	890	1143	531										499
MH 7-25	H 7	2100	2135	-	-	995	1353	636	604										
MH 7-40	H 2	1140	1175	-	-	515	393	158	117	900	475	186,5	270	530	180 (178,5)	18 (15)	25	M27	
	H 3	1300	1335	-	-	595	553	238	197										
	H 4	1460	1495	-	-	675	713	318	277										
	H 5	1675	1710	-	-	785	928	426	384										
	H 6	1890	1925	-	-	890	1143	533	492										
		H 6	2100	2135	-	-	995	1353	636										597

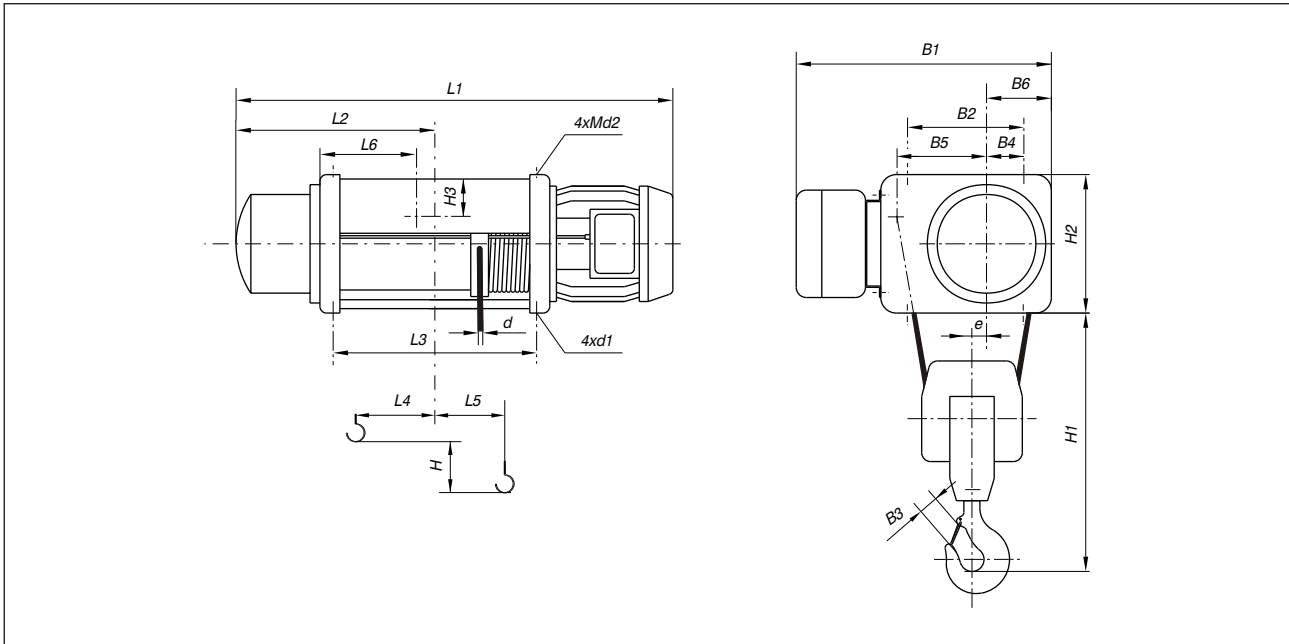
¹⁾ The data given in brackets are to be considered for wire ropes with high strength and smaller diameter.

Stationary electric wire rope hoist - Reeving 2/2



Type	Capacity, kg	General dimensions, mm																	
		L1				L2	L3	Lo min	B1	B2	B3	B4	B6	H1	H2	R	d	d1	d2
		V 1		V 2															
		without creep speed	with creep speed	without creep speed	with creep speed														
MH 3-05	H 3	925	965	925	965	420	429	110	580	295	34	105	159	450	321	89	5	15	M14
	H 4	1125	1165	1125	1165	520	629												
	H 5	1325	1365	1325	1365	620	829												
MHM 4-05	H 3	1025	1095	1025	1095	470	441	110	650	325	34	127,5	184	366	119,5	7	17	M20	
MHM 5-05	H 4	1310	1395	1340	1395	605	711												
H 3	1025	1095	1025	1095	470	441													
MHM 4-10	H 4	1225	1295	1225	1295	570	641	110	650	325	34	127,5	184	366	120,5	7	17	M20	
	H 5	1425	1495	1425	1495	670	841												
	H 5	1540	1630	1575	1630	715	873												
MH 6-10	H 6	1645	1735	1680	1735	770	978	110	760	390	34	157	220	432	156	21	M24		
	H 6	1645	1735	1680	1735	770	978												
	H 7	1820	1910	1855	1910	860	1153												
MHM 5-16	H 3	1090	1175	1120	1175	495	491	155	650	325	40	127,5	184	366	122	10	17	M20	
	H 4	1310	1395	1340	1395	605	711												
	H 5	1530	1615	1560	1615	715	931												
MH 6-16	H 6	1750	1835	1780	1835	825	1151	155	650	325	40	127,5	184	366	122	10	17	M20	
	H 5	1540	1630	1575	1630	715	873												
	H 6	1645	1735	1680	1735	770	978												
MH 6-16	H 6	1645	1735	1680	1735	770	978	155	760	390	45	157	220	432	157,5	21	M24		
	H 7	1820	1910	1855	1910	860	1153												
	H 7	1820	1910	1855	1910	860	1153												
MH 6-25	H 4	1330	1420	1365	1420	610	663	200	760	390	45	157	220	620	432	158,5	12	21	M24
	H 5	1540	1630	1575	1630	715	873												
	H 6	1645	1735	1680	1735	770	978												
MH 7-25	H 6	1890	1925	-	-	890	1143	200	900	475	45	186,5	270	530	177	25	M27		
	H 7	2100	2135	-	-	995	1353												
	H 7	2100	2135	-	-	995	1353												
MH 7-40	H 4	1460	1495	-	-	675	713	240	900	475	50	186,5	270	710	530	178,5	15	25	M27
	H 5	1675	1710	-	-	785	928												
	H 6	1890	1925	-	-	890	1143												
	H 7	2100	2135	-	-	995	1353												

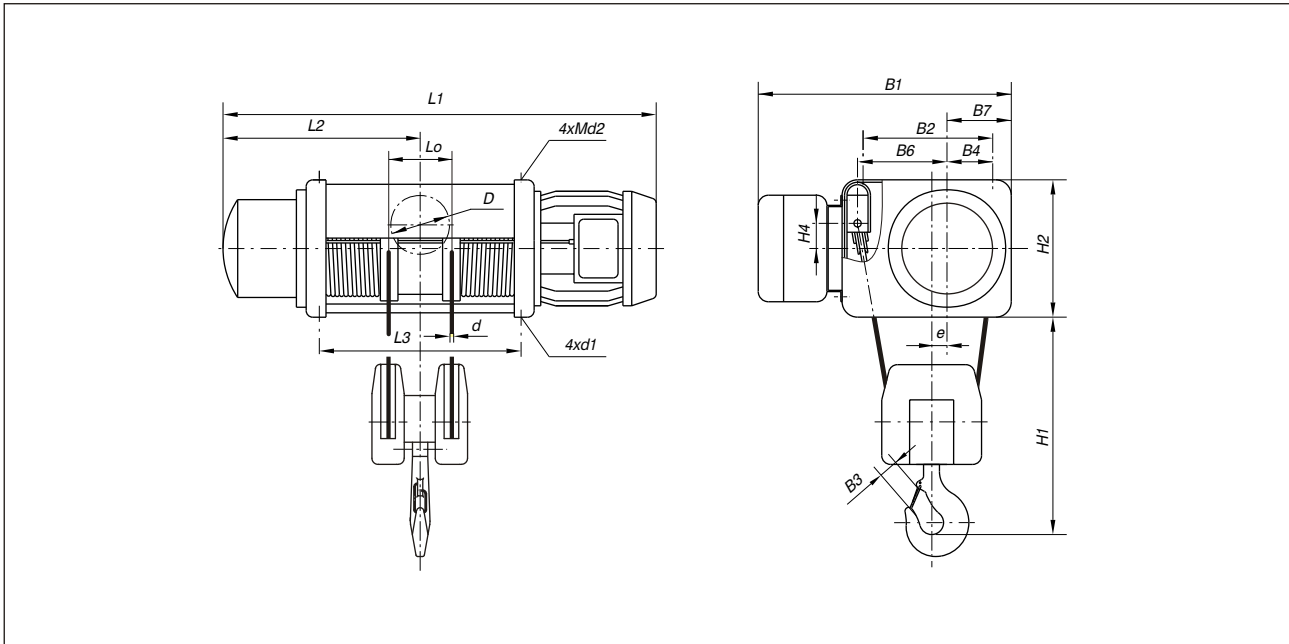
Stationary electric wire rope hoist - Reeving 2/1



Type	Capacity, kg	General dimensions, mm																					
		L1				L2	L3	L4	L5	L6	B1	B2	B3	B4	B5	B6	H1	H2	H3	d	d1	d2	e
		without creep speed	with creep speed	without creep speed	with creep speed																		
MH 3-05	H 1	720	760	720	760	320	224	45	40	145	580	295	34	105	190,5	159	450	321	73	7	15	M14	50
	H 2	825	865	825	865	370	329	95															
	H 3	925	965	925	965	420	429	95	90	245	650	325	127,5	199	184	366	90	17	M20	35			
	H 4	1125	1165	1125	1165	520	629	195															
	H 5	1325	1365	1325	1365	620	829	295															
MHM 4-05	H 5	1425	1495	1425	1495	670	841	307	74	240	79	250	650	325	127,5	199	184	366	90	17	M20	35	
MHM 5-05	H 5	1530	1615	1560	1615	715	931	345	79	250													
	H 6	1750	1835	1780	1835	825	1151	455															
MHM 4-10	H 1	815	885	815	885	365	231	52	27	140	650	325	40	127,5	199	184	550	366	96	10	17	M20	35
	H 2	925	995	925	995	420	341	107															
	H 3	1025	1095	1025	1095	470	441	107	74	240	760	390	157	235	220	432	116	21	M24	38			
	H 4	1225	1295	1225	1295	570	641	207															
	H 5	1425	1495	1425	1495	670	841	307															
MH 6-10	H 5	1540	1630	1575	1630	715	873	316	73	250	760	390	157	235	220	432	116	21	M24	38			
H 6	1645	1735	1680	1735	770	978	367																
	H 7	1820	1910	1855	1910	860	1153	455															
MHM 5-16	H 1	860	945	890	945	380	261	60	29	150	650	325	45	127,5	199	184	620	366	86	12 (10)	17	M20	35
	H 2	980	1065	1010	1065	440	381	120															
	H 3	1090	1175	1120	1175	495	491	125	79	250	760	390	157	235	220	432	116	21	M24	38			
	H 4	1310	1395	1340	1395	605	711	235															
	H 5	1530	1615	1560	1615	715	931	345															
MH 6-16	H 5	1750	1835	1780	1835	825	1151	455	73	250	760	390	157	235	220	432	116	21	M24	38			
H 6	1645	1735	1680	1735	770	978	367																
	H 7	1820	1910	1855	1910	860	1153	455															
MH 6-25	H 2	1015	1105	1050	1105	445	348	104	23	154	760	390	50	157	235	220	710	432	110	15 (13)	21	M24	38
	H 3	1120	1210	1155	1210	505	453	106															
	H 4	1330	1420	1365	1420	610	663	211	73	254	900	475	186,5	290,5	270	530	162	25	M27	55			
	H 5	1540	1630	1575	1630	715	873	316															
	H 6	1645	1735	1680	1735	770	978	367															
MH 7-25	H 6	1820	1910	1855	1910	860	1153	455	104	340	900	475	186,5	290,5	270	530	162	25	M27	55			
H 7	1890	1925	-	-	890	1143	408																
	H 2	1140	1175	-	-	515	393	82	54	240	900	475	56	186,5	290,5	270	840	530	157	18 (15)	25	M27	55
MH 7-40	H 3	1300	1335	-	-	595	553	162															
	H 4	1460	1495	-	-	675	713	192	104	340	900	475	56	186,5	290,5	270	840	530	157	18 (15)	25	M27	55
	H 4	1460	1495	-	-	675	713	192															
	H 5	1675	1710	-	-	785	928	300															
	H 5	1675	1710	-	-	785	928	300	104	340	900	475	56	186,5	290,5	270	840	530	157	18 (15)	25	M27	55
	H 6	1890	1925	-	-	890	1143	408															
	H 6	1890	1925	-	-	890	1143	408															
	H 7	2100	2135	-	-	995	1353	512															

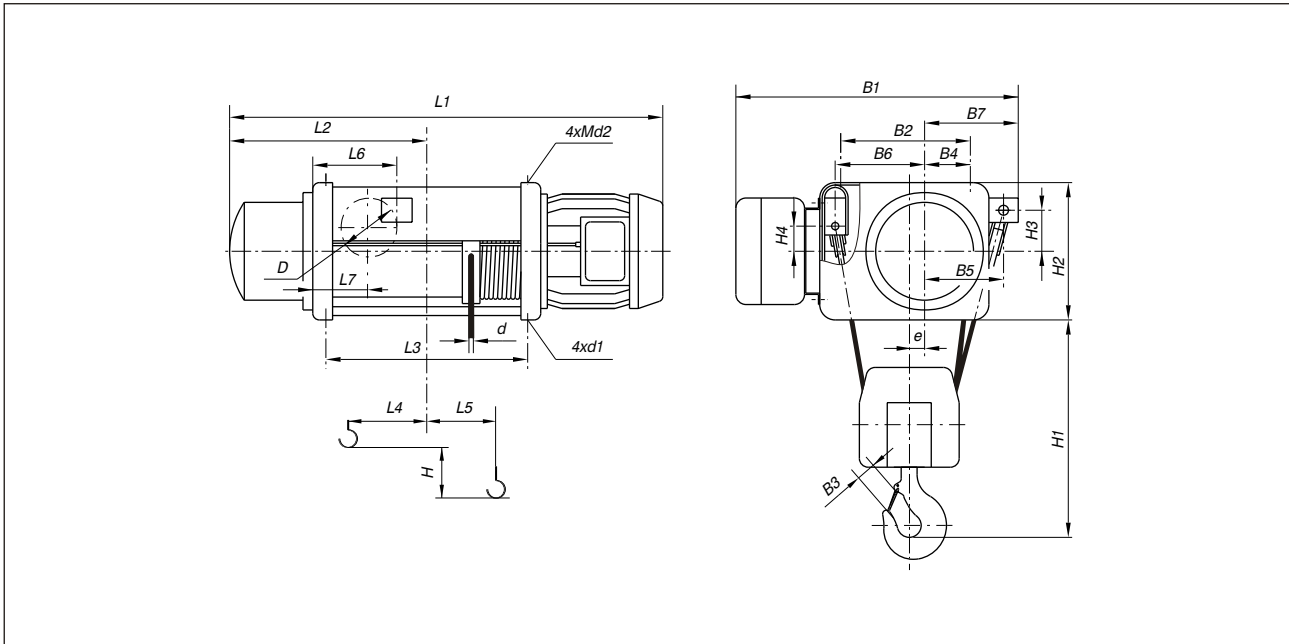
¹⁾ The data given in brackets are to be considered for wire ropes with high strength and smaller diameter.

Stationary electric wire rope hoist - Reeving 4/2



Type	Capacity, kg	General dimensions, mm																														
		L1				L2	L3	Lo min	B1	B2	B3	B4	B6	B7	H1	H2	H4	D	d	d1	d2	e										
		V 1		V 2																												
without creep speed	with creep speed	without creep speed	with creep speed																													
MH 3-05	H 4	1125	1165	1125	1165	520	629	110	650	295	40	105	190,5	159	415	321	75	100	5	15	M14	50										
	H 5	1325	1365	1325	1365	620	829		730	325		127,5	199	184		366	91		17	M20	35											
	MHM 4-05	H 3	1025	1095	1025	1095	470		441	127,5		199	184	366		91	101		17	M20	35											
MHM 5-05	H 4	1310	1395	1340	1395	605	711	110	850	390	40	157	235	220	415	432	117	140	7	21	M24	38										
MHM 4-10	H 4	1225	1295	1225	1295	570	641																730	325	127,5	199	184	366	91	17	M20	35
H 5	1425	1495	1425	1495	670	841	127,5																199	184	415	366	91	140	7	21	M24	38
MH 6-10	H 5	1540	1630	1575	1630	715	873	110	850	390	40	157	235	220	415	432	117	140	7	21	M24	38										
H 6	1645	1735	1680	1735	770	978	127,5																199	184	366	91	140	7	21	M24	38	
H 7	1820	1910	1855	1910	860	1153	127,5																199	184	366	91	140	7	21	M24	38	
MHM 5-16	H 4	1310	1395	1340	1395	605	711	155	850	390	50	157	235	220	525	101	200	10	21	M24	38											
H 5	1530	1615	1560	1615	715	931	127,5															199	184	366	101	200	10	21	M24	38		
H 6	1750	1835	1780	1835	825	1151	127,5															199	184	366	101	200	10	21	M24	38		
MH 6-16	H 5	1540	1630	1575	1630	715	873	200	850	390	56	157	235	220	565	432	117	240	12	21	M24	38										
H 6	1645	1735	1680	1735	770	978	127,5																199	184	366	101	200	10	21	M24	38	
H 7	1820	1910	1855	1910	860	1153	127,5																199	184	366	101	200	10	21	M24	38	
MH 6-25	H 6	1890	1925	-	-	890	1143	200	1000	475	56	186,5	290,5	270	565	432	117	240	12	25	M27	55										
H 7	2100	2135	-	-	995	1353	127,5																199	184	366	101	200	10	21	M24	38	
MH 7-25	H 6	1890	1925	-	-	890	1143																1000	475	56	186,5	290,5	270	565	432	117	240
MH 7-40	H 4	1460	1495	-	-	675	713	240	1000	475	71	186,5	290,5	270	695	530	128	300	15	25	M27	55										
H 5	1675	1710	-	-	785	928	127,5																199	184	366	101	200	10	21	M24	38	
H 6	1890	1925	-	-	890	1143	127,5																199	184	366	101	200	10	21	M24	38	
H 7	2100	2135	-	-	995	1353	127,5																199	184	366	101	200	10	21	M24	38	

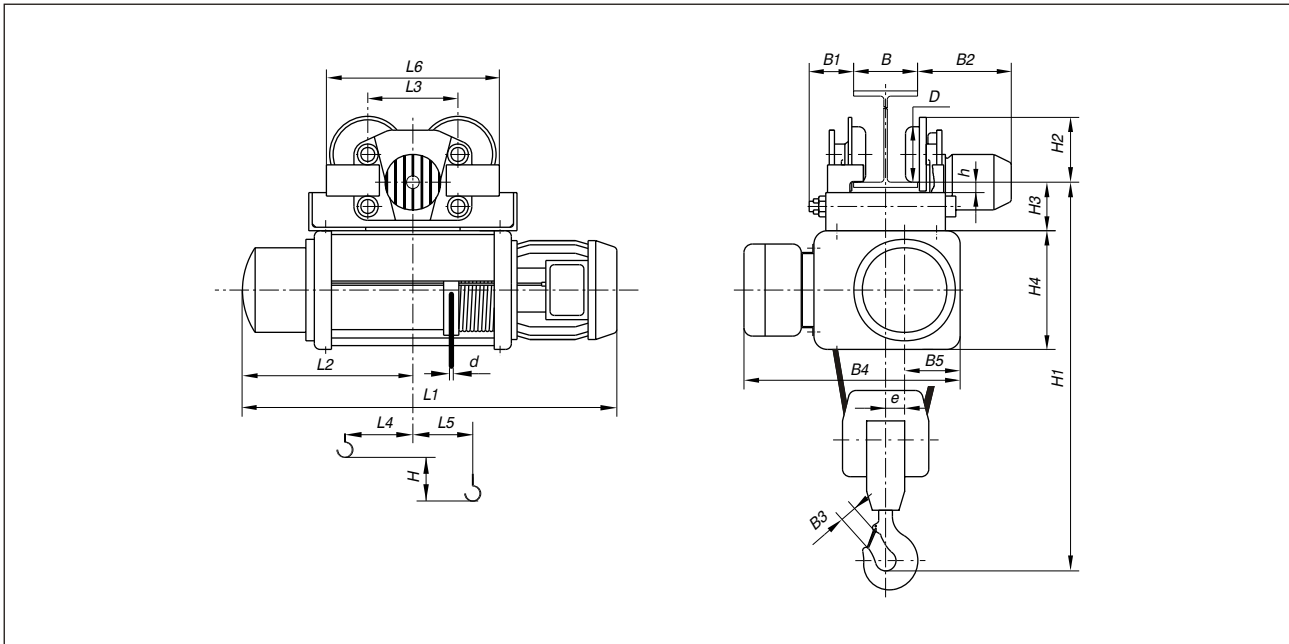
Stationary electric wire rope hoist - Reeving 4/1



Type	Capacity, kg	General dimensions, mm																											
		L1				L2	L3	L4	L5	L6	L7	B1	B2	B3	B4	B5	B6	B7	H1	H2	H3	H4	D	d	d1	d2	e		
		V 1		V 2																									
without creep speed	with creep speed	without creep speed	with creep speed																										
MH 3-05	H 3	925	965	925	965	420	429	90	45																				
	H 4	1125	1165	1125	1165	520	629	190	-45	250	161	650	295		105	189,5	190,5	229,5		321	71	75	140		15	M14	25		
	H 5	1325	1365	1325	1365	620	829	290	-95																				
MHM 4-05	H 5	1425	1495	1425	1495	670	841	307	-115	300	194																		
	H 5	1530	1615	1560	1615	715	931	345	-130																				
MHM 5-05	H 5	1530	1615	1560	1615	715	931	345	-130	350	216																		
	H 6	1750	1835	1780	1835	825	1151	455	-185																				
MHM 4-10	H 3	1025	1095	1025	1095	470	441	65	25																				
	H 4	1225	1295	1225	1295	570	641	165	-25	300	194	730	325		127,5	206	199	254		366	85	91	200		17	M20	15		
	H 5	1425	1495	1425	1495	670	841	265	-75																				
MH 6-10	H 5	1540	1630	1575	1630	715	873	316	-120																				
	H 6	1645	1735	1680	1735	770	978	367	-145	400	240	850	390		157	254	235	309		432	113	117	300		21	M24	14		
MH 6-16	H 6	1645	1735	1680	1735	770	978	367	-145	400	240	850	390		157	254	235	309		432	113	117	300		21	M24	14		
	H 7	1820	1910	1855	1910	860	1153	455	-190																				
MHM 5-16	H 3	1090	1175	1120	1175	495	491	67	35																				
	H 4	1310	1395	1340	1395	605	711	177	-20	350	216	730	325		127,5	206	199	254		366	95	101	240		17	M20	15		
	H 5	1530	1615	1560	1615	715	931	287	-70																				
	H 6	1750	1835	1780	1835	825	1151	397	-125																				
	H 5	1540	1630	1575	1630	715	873	316	-120																				
MH 6-25	H 3	1120	1210	1155	1210	505	453	29	61																				
	H 4	1330	1420	1365	1420	610	663	134	8																				
	H 5	1540	1630	1575	1630	715	873	239	-44	400	240	850	390		157	254	235	309		432	113	117	300		21	M24	14		
	H 6	1645	1735	1680	1735	770	978	291	-71																				
	H 7	1820	1910	1855	1910	860	1153	291	-71																				
MH 7-25	H 6	1890	1925	-	-	890	1143	408	-150	500	324	1000	475		186,5	309	290,5	369		530	126	128	360		25	M27	23		
	H 7	2100	2135	-	-	995	1353	512	-202																				
MH 7-40	H 3	1300	1335	-	-	595	553	42	0																				
	H 4	1460	1495	-	-	675	713	102	46																				
	H 5	1675	1710	-	-	785	928	210	-8	500	324	1000	475	90	186,5	309	290,5	369	825	530	126	128	360		25	M27	23		
	H 6	1890	1925	-	-	890	1143	318	-62																				
	H 7	2100	2135	-	-	995	1353	422	-114																				

¹⁾ The data given in brackets are to be considered for wire ropes with high strength and smaller diameter.

Monorail trolley, standard headroom - Reeving 2/1



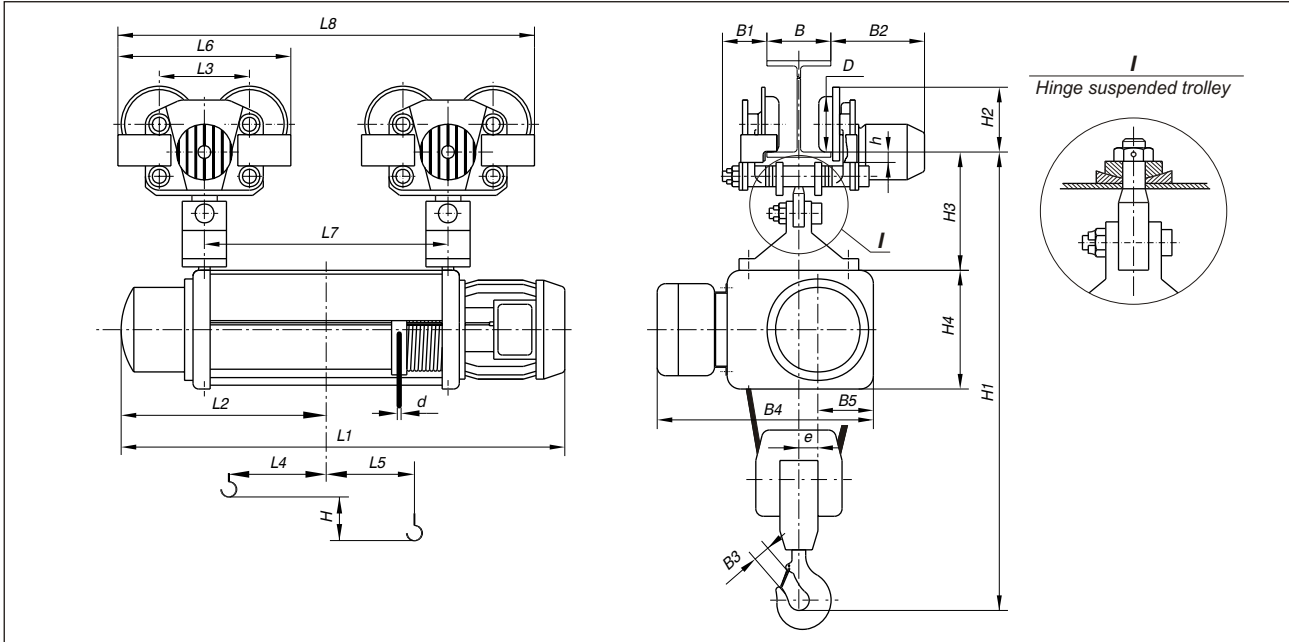
Type	Capacity, kg	General dimensions, mm																							
		L1				L2	L3	L4	L5	L6	B	B1	B2 _{max}	B3	B4	B5	H1	H2	H3	H4	D	d	e	h	
		V1		V2																					
		without creep speed	with creep speed	without creep speed	with creep speed																				
MH 3-05	H 1	720	760	720	760	320	225	45	40	410	90 ... 130	92	310	34	580	159	889	140	118	321	120	7	50	33	
	H 2	825	865	825	865	370		95																	
	H 3	925	965	925	965	420		90																	
MHM 4-10	H 1	815	885	815	885	365	280	52	27	530	130 ... 150	118	360	40	650	184	1068	200	152	366	175	10	35	42	
	H 2	925	995	925	995	420		107																	
	H 3	1025	1095	1025	1095	470		74																	
MHM 5-16	H 1	860	945	890	945	380	280	60	29	530	130 ... 150	118	360	45	650	184	1138	200	152	366	175	12 (10)	35	42	
	H 2	980	1065	1010	1065	440		120																	
	H 3	1090	1175	1120	1175	495		125																	79
MH 6-25	H 2	1015	1105	1050	1105	445	310	104	23	590	130 ... 150	140	365	50	760	220	1307	230	165	432	210	15 (13)	38	33	
	H 3	1120	1210	1155	1210	505		106																	73

¹⁾ The data given in brackets are to be considered for wire ropes with high strength and smaller diameter.

Minimum railway radius - R_{min} , mm

Type	R_{min}
MH 3- ...	1500
MHM 4- ...	2500
MHM 5- ...	2500
MH 6- ...	3500

Monorail trolley, standard headroom - Reeving 2/1



Type	Capacity, kg	General dimensions, mm																											
		L1				L2	L3	L4	L5	L6	L7	L8	B	B1	B2, max	B3	B4	B5	H1		H2	H3		H4	D	d	e	h	
		without creep speed		with creep speed															*	**		*	**						
		V1	V2	V1	V2																								
MH 3-05	H 4	1125	1165	1125	1165	520	225	195	90	410	629	1039	90 ... 130	92	310	34	580	159	928	981	140	157	210	321	120	7	50	35	
	H 5	1325	1365	1325	1365	620		295		207	530	841					1371	829	1239	650	184	1022	1094	200	206				278
MHM 4-05	H 5	1425	1495	1425	1495	670	280	307	74	530	841	1371	130 ... 150	118	360	40	650	184	1022	1094	200	206	278	366	175	10	35	38	
MHM 5-05	H 5	1530	1615	1560	1615	715		345			79	931					1461	641	1171	650	184	1122	1194	200	206				278
MHM 5-05	H 6	1750	1835	1780	1835	825	280	455	79	530	1151	1691	130 ... 150	118	360	40	760	220	1188	1260	200	206	278	366	175	10	35	38	
	H 4	1225	1295	1225	1295	570		207			74	641					1171	650	184	1122	1194	200	206	278	366				175
MHM 4-10	H 5	1425	1495	1425	1495	670	280	307	74	530	841	1371	130 ... 150	118	360	40	650	184	1122	1194	200	206	278	366	175	10	35	38	
H 5	1540	1630	1575	1630	715	316		73			873	1403					760	220	1188	1260	200	206	278	366	175				
MH 6-10	H 6	1645	1735	1680	1735	770	280	367	73	530	978	1508	130 ... 150	118	360	45	760	220	1258	1330	200	206	278	366	175	12	(10)	35	38
	H 7	1820	1910	1855	1910	860		455			73	1153					1683	760	220	1258	1330	200	206	278	366				
MHM 5-16	H 4	1310	1395	1340	1395	605	280	235	79	530	711	1241	130 ... 150	118	360	45	650	184	1192	1264	200	206	278	366	175	12	(10)	35	38
	H 5	1530	1615	1560	1615	715		345			79	931					1461	650	184	1192	1264	200	206	278	366				
MH 6-16	H 5	1540	1630	1575	1630	715	280	316	73	530	873	1403	130 ... 150	118	360	50	760	220	1348	1420	200	206	278	366	175	15	(13)	38	
	H 6	1645	1735	1680	1735	770		367			73	978					1508	760	220	1258	1330	200	206	278	366				175
MH 6-16	H 6	1645	1735	1680	1735	770	280	367	73	530	978	1508	130 ... 150	118	360	50	760	220	1258	1330	200	206	278	366	175	15	(13)	38	
	H 7	1820	1910	1855	1910	860		455			73	1153					1683	760	220	1258	1330	200	206	278	366				175
MH 6-25	H 4	1330	1420	1365	1420	610	280	211	73	530	663	1193	130 ... 150	118	360	50	760	220	1348	1420	200	206	278	366	175	15	(13)	38	
	H 5	1540	1630	1575	1630	715		316			73	873					1403	760	220	1348	1420	200	206	278	366				175
MH 6-25	H 6	1645	1735	1680	1735	770	280	367	73	530	978	1508	130 ... 150	118	360	50	760	220	1348	1420	200	206	278	366	175	15	(13)	38	
	H 7	1820	1910	1855	1910	860		455			73	1153					1683	760	220	1348	1420	200	206	278	366				175
MH 7-25	H 6	1890	1925	-	-	890	310	408	104	590	1143	1733	130 ... 150	140	365	56	900	270	1393	1506	230	243	356	530	210	18	(15)	55	35
	H 7	2100	2135	-	-	995	512	104	590	1353	1943	900					270	1393	1506	230	243	356	530	210					
MH 7-40	H 3	1300	1335	-	-	595	310	162	54	590	553	1143	130 ... 150	140	365	56	900	270	1611	1724	230	243	356	530	210	18	(15)	55	35
	H 4	1460	1495	-	-	675		192	54		713	1303					900	270	1611	1724	230	243	356	530	210				
	H 5	1675	1710	-	-	785		300	104		928	1518					900	270	1611	1724	230	243	356	530	210				
	H 6	1890	1925	-	-	890		408	104		1143	1733					900	270	1611	1724	230	243	356	530	210				
MH 7-40	H 6	1890	1925	-	-	890	310	408	104	590	1143	1733	130 ... 150	140	365	56	900	270	1611	1724	230	243	356	530	210	18	(15)	55	35
	H 7	2100	2135	-	-	995		512			104	1353					1943	900	270	1611	1724	230	243	356	530				

Minimum railway radius - R_{min} mm

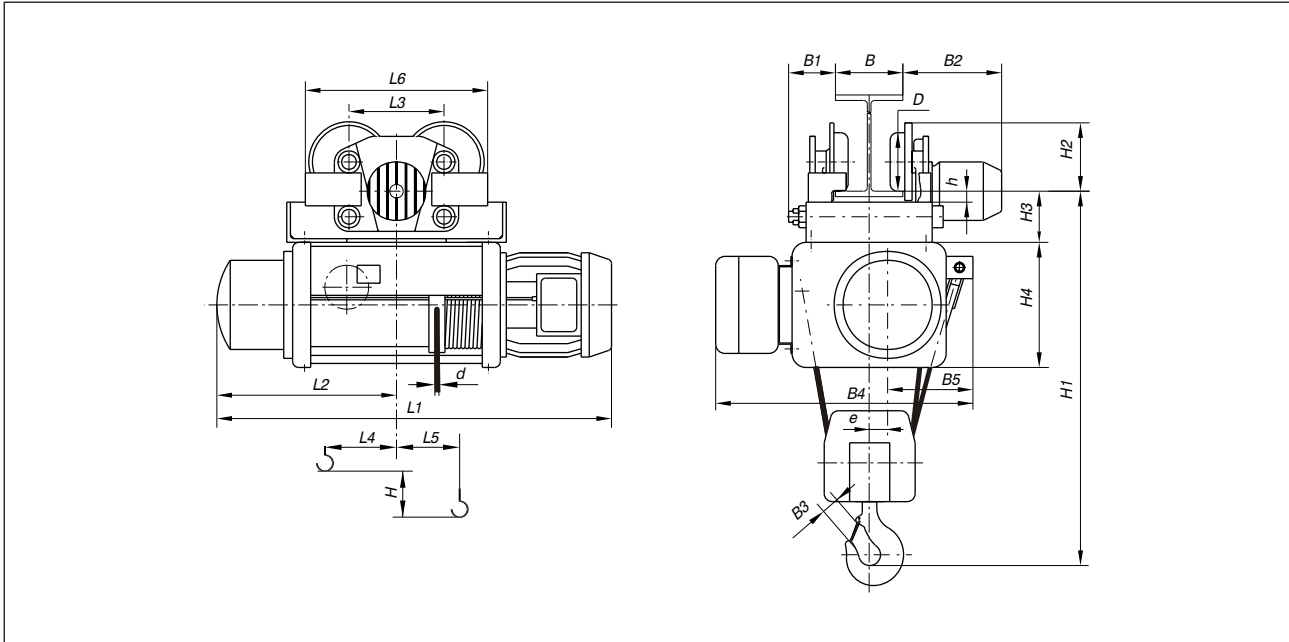
Type	R_{min} **
MH 3- ...	1500
MHM 4- ...	2500
MHM 5- ...	2500
MH 6- ...	2500
MH 7- ...	3500

¹⁾ The data given in brackets are to be considered for wire ropes with high strength and smaller diameter.

²⁾ The data given with * are to be considered for stiff suspended trolley

³⁾ The data given with ** are to be considered for hinge suspended trolley

Monorail trolley, standard headroom - Reeving 4/1



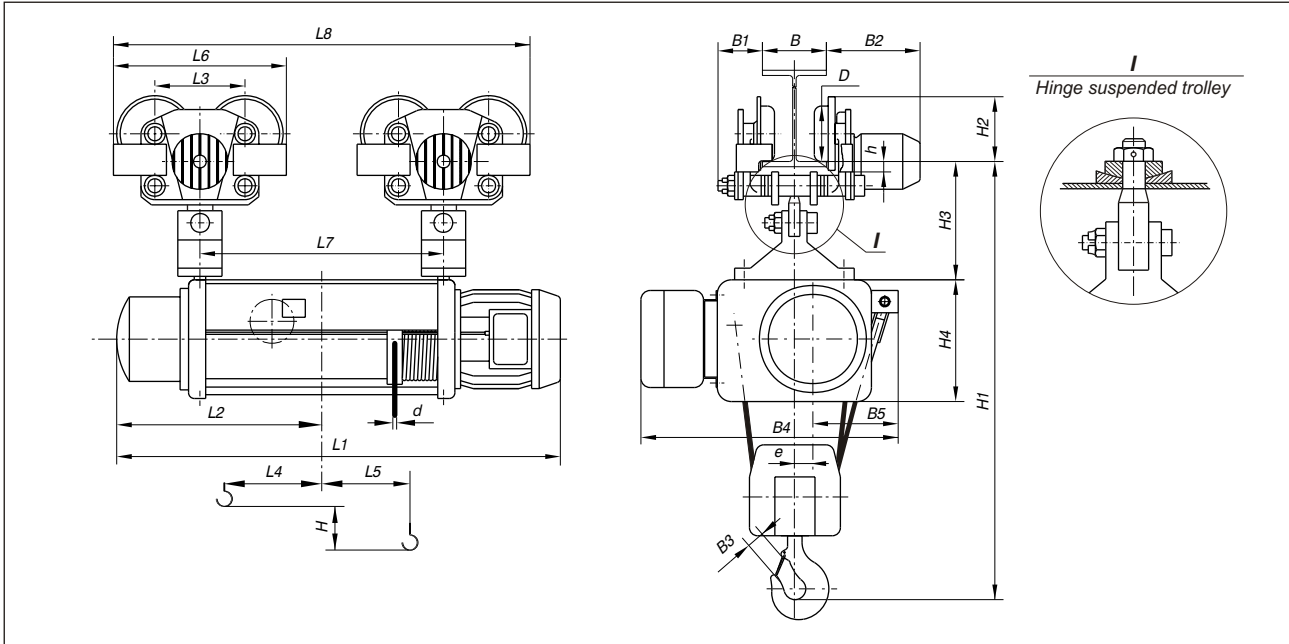
Type	Capacity, kg	General dimensions, mm																						
		L1				L2	L3	L4	L5	L6	B	B1	B2, max	B3	B4	B5	H1	H2	H3	H4	D	d	e	h
		V 1		V 2																				
		without creep speed	with creep speed	without creep speed	with creep speed																			
MH 3-05 H 3	2000	925	965	925	965	420	280	90	45	530	90 ... 130	118	360	40	650	229,5	895	200	153	321	175	7	25	38
MHM 4-10 H 3	4000	1025	1095	1025	1095	470	280	65	25	530	130 ... 150	118	360	50	730	254	1045	200	153	366	175	10	15	38
MHM 5-16 H 3	6300	1090	1175	1120	1175	495	310	67	35	590	130 ... 150	140	365	56	730	254	1100	230	165	366	210	12 (10)	15	33

¹⁾ The data given in brackets are to be considered for wire ropes with high strength and smaller diameter.

Minimum railway radius - R_{min} , mm

Type	R_{min}
MH 3- ...	2500
MHM 4- ...	2500
MHM 5- ...	3500

Monorail trolley, standard headroom - Reeving 4/1



Type	Capacity, kg	General dimensions, mm																											
		L1				L2	L3	L4	L5	L6	L7	L8	B	B1	B2, max	B3	B4	B5	H1		H2		H3		H4	D	d	e	h
		without creep speed		with creep speed															*	**	*	**							
		V1	V2	V1	V2																								
MH 3-05	H 4	1125	1165	1125	1165	520	225	190	-45	410	629	1039	90 ... 130	92	310	40	650	229.5	893	946	140	157	210	321	120	7	25	35	
	H 5	1325	1365	1325	1365	620		290	-95		829	1239																	
MHM 4-05	H 5	1425	1495	1425	1495	670	280	307	-115		841	1371	130 ... 150	118	360	50	730	254	987	1059	200	206	278	366	175	15	38		
MHM 5-05	H 5	1530	1615	1560	1615	715		345	-130	530	931	1461																	
	H 6	1750	1835	1780	1835	825	455	-185		1151	1691	140	365	850	309	1163	1235	230	243	356	432	210	10	14	35				
MHM 4-10	H 4	1225	1295	1225	1295	570	165	-25	530	641	1171																		
	H 5	1425	1495	1425	1495	670	265	-75		841	1371	130 ... 150	118	360	50	730	254	1097	1169	200	206	278	366	175	15	38			
MH 6-10	H 5	1540	1630	1575	1630	715	280	316	-120	590	873							1463											
	H 6	1645	1735	1680	1735	770	367	-145		978	1468	140	365	850	309	1163	1235	230	243	356	432	210	10	14	35				
	H 7	1820	1910	1855	1910	860	455	-190		1153	1743																		
MHM 5-16	H 4	1310	1395	1340	1395	605	280	177	-20		711	1241	130 ... 150	118	360	56	730	254	1137	1209	200	206	278	366	175	12	15	38	
	H 5	1530	1615	1560	1615	715		287	-70	530	931	1461																	
	H 6	1750	1835	1780	1835	825	397	-125		1151	1681	140	365	850	309	1203	1275	230	243	356	432	210	10	14	35				
MH 6-16	H 5	1540	1630	1575	1630	715	316	-120		873	1463																		
	H 6	1645	1735	1680	1735	770	367	-145	590	978	1468	140	365	850	309	1203	1275	230	243	356	432	210	10	14	35				
	H 7	1820	1910	1855	1910	860	455	-190		1153	1743																		
MH 6-25	H 3	1120	1210	1155	1210	505	310	29	61		453	1043	130 ... 150	140	365	71	850	309	1333	1405	230	243	278	432	210	15	14	35	
	H 4	1330	1420	1365	1420	610		134	8		663	1253																	
	H 5	1540	1630	1575	1630	715		239	-44		873	1463																	
	H 6	1645	1735	1680	1735	770		291	-71	590	978	1468																	
MH 7-25	H 6	1890	1925	-	-	890	310	408	-150		1143	1733	130 ... 150	140	365	90	1000	369	1468	1581	230	243	356	530	210	18	23	35	
	H 7	2100	2135	-	-	995		512	-202		1353	1943																	
MH 7-32	H 4	1460	1495	-	-	675	310	102	46	590	713	1303	130 ... 150	140	365	90	1000	369	1598	1711	230	243	356	530	210	18	23	35	
	H 5	1675	1710	-	-	785		210	-8		928	1518																	

Minimum railway radius - R_{min} , mm

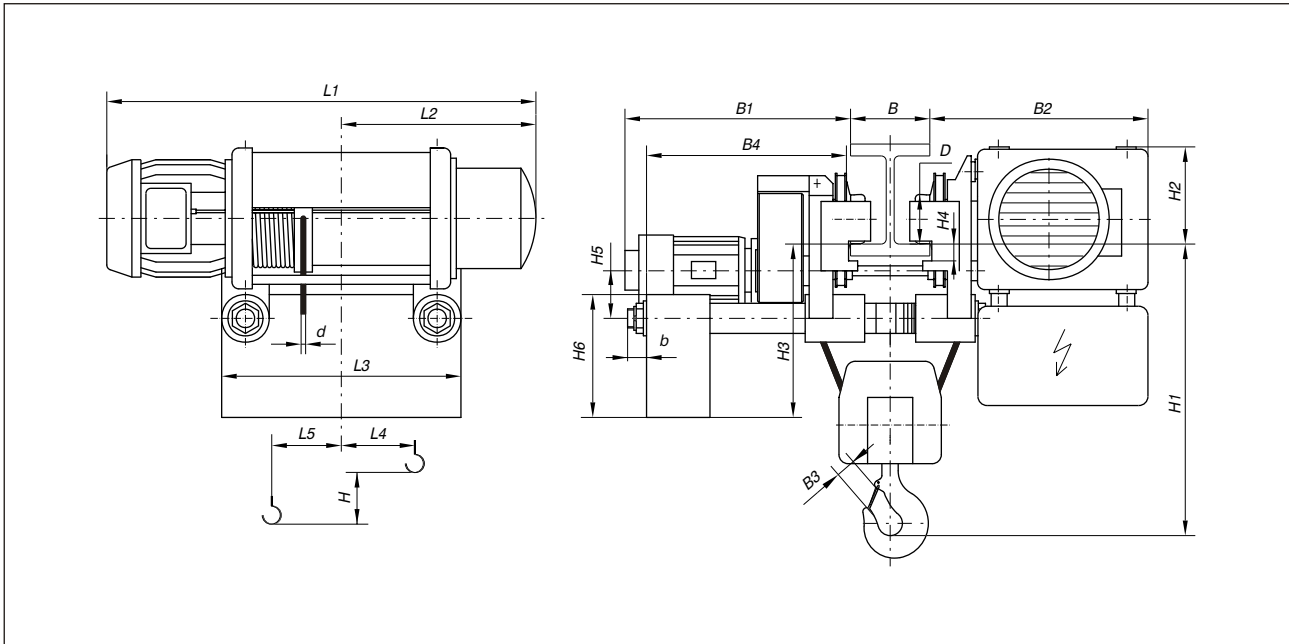
Type	R_{min}^{**}
MH 3- ...	1500
MHM 4- ...	2500
MHM 5- ...	2500
MH 6- ...	3500
MH 7- ...	3500

¹⁾ The data given in brackets are to be considered for wire ropes with high strength and smaller diameter.

²⁾ The data given with * are to be considered for stiff suspended trolley

³⁾ The data given with ** are to be considered for hinge suspended trolley

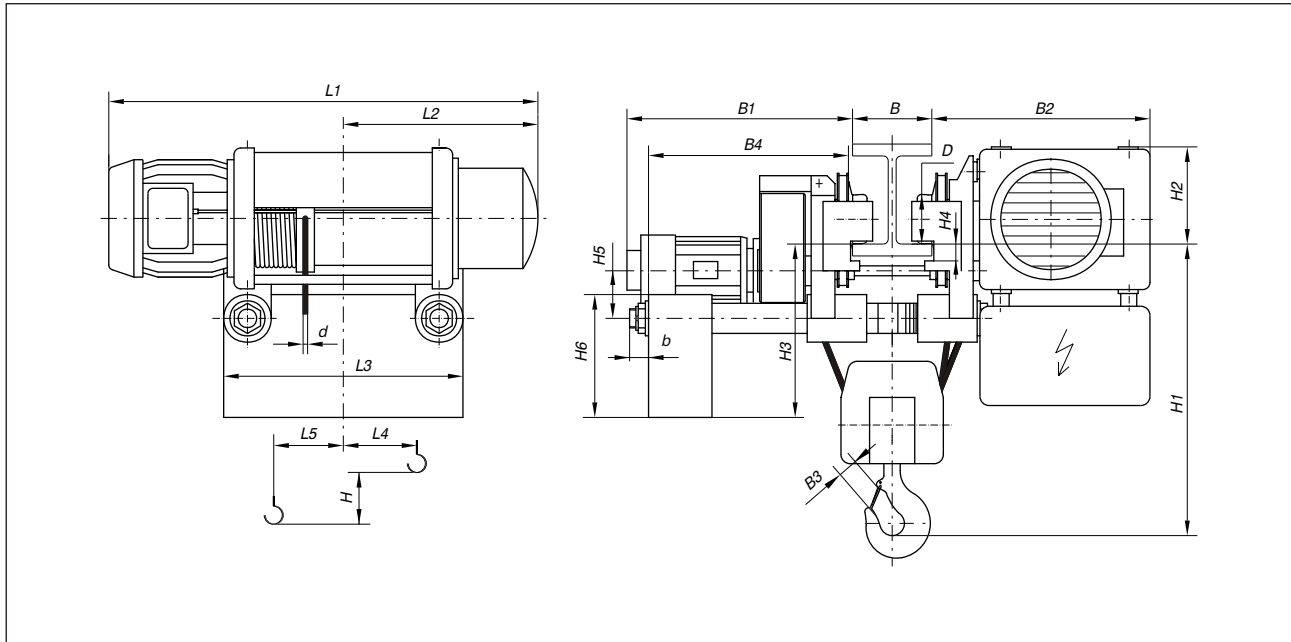
Monorail trolley, reduced headroom - Reeving 2/1



Type	Capacity, kg	General dimensions, mm																					
		L1				L2	L3	L4	L5	B	B1	B2	B3	B4	H1	H2	H3	H4	H5	H6	D	b	d
		without creep speed	with creep speed	without creep speed	with creep speed																		
MH 3-05	H 1	720	760	720	760	320	299	52	32	106 ... 300	500	462	34	545 ... 330	615	164	455	37	133	310	100	46	7
	H 2	825	865	825	865	370	404	104															
	H 3	925	965	925	965	420	504	100	87														
	H 4	1125	1165	1125	1165	520	704	200															
	H 5	1325	1365	1325	1365	620	904	300															
MHM 4-10	H 1	815	885	815	885	365	528	50	33	120 ... 300	515	515	40	570 ... 390	650	215	459	45	130	310	125	60	10
	H 2	925	995	925	995	420	628	105															
	H 3	1025	1095	1025	1095	470	716	110	79														
	H 4	1225	1295	1225	1295	570	726	175															
	H 5	1425	1495	1425	1495	670	926	275	114														
MHM 5-16	H 1	860	945	890	945	380	658	65	29	130 ... 300	515	515	45	560 ... 390	730	215	459	45	130	310	125	60	12 (10)
	H 2	980	1065	1010	1065	440	716	125															
	H 3	1090	1175	1120	1175	495	806	142	67														
	H 4	1310	1395	1340	1395	605	806	162															
	H 5	1530	1615	1560	1615	715	1026	272	157														
MH 6-25	H 2	1015	1105	1050	1105	445	758	90	38	130 ... 300	550	630	50	630 ... 460	920	260	460	32	155	310	160	60	15 (13)
	H 3	1120	1210	1155	1210	505	858	90															
	H 4	1330	1420	1365	1420	610	858	143	142														
	H 5	1540	1630	1575	1630	715	974	248															
	MH 7-40	H 2	1140	1175	-	-	515	873	75														
H 3		1300	1335	-	-	595	1028	155															
H 4		1460	1495	-	-	675	1178	167															
H 5		1675	1710	-	-	785	1308	248	118														
H 6		1890	1925	-	-	890	1408	382															
H 7		2100	2135	-	-	995	1473	487															

¹⁾ The data given in brackets are to be considered for wire ropes with high strength and smaller diameter.

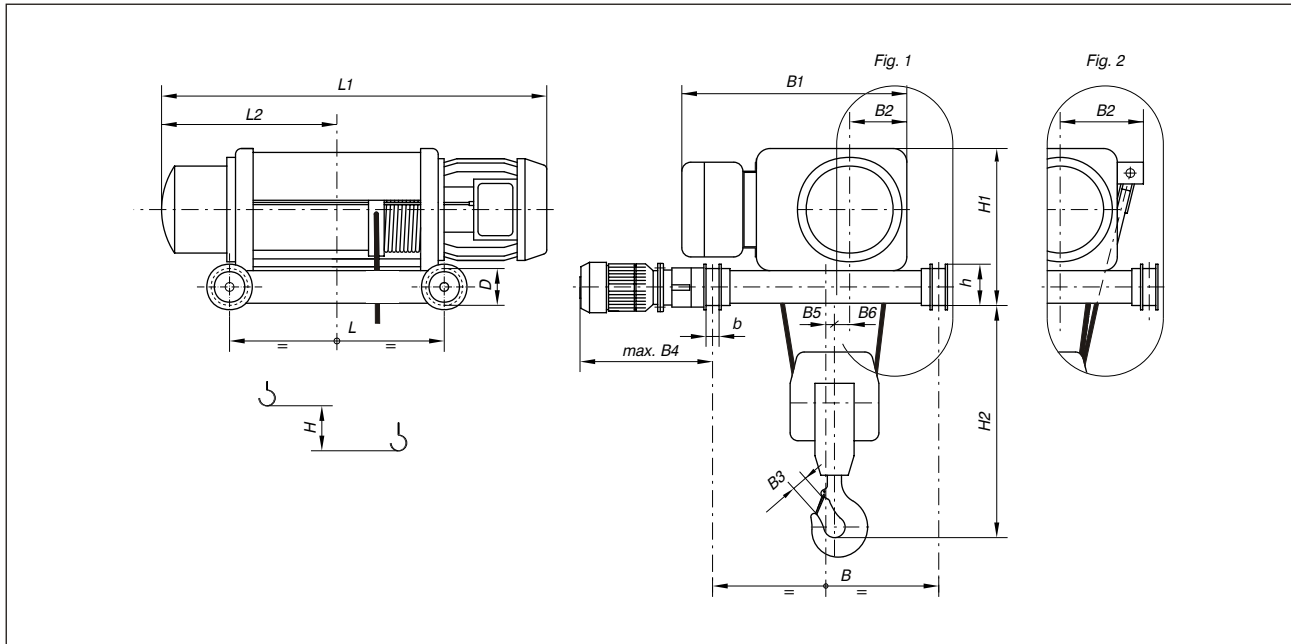
Monorail trolley, reduced headroom - Reeving 4/1



Type	Capacity, kg	General dimensions, mm																					
		L1				L2	L3	L4	L5	B	B1	B2	B3	B4	H1	H2	H3	H4	H5	H6	D	b	d
		V1		V2																			
		without creep speed	with creep speed	without creep speed	with creep speed																		
MH 3-05	H 3	925	965	925	965	420	504	45,5	41	106 ... 300	500	462	40	545 ... 330	640	160	455	37	133	310	100	46	7
	H 4	1125	1165	1125	1165	520	704	146	-9														
	H 5	1325	1365	1325	1365	620	904	246	-59														
MHM 4-10	H 3	1025	1095	1025	1095	470	716	29	54	120 ... 300	515	515	50	570 ... 390	640	215	459	45	130	310	125	60	10
	H 4	1225	1295	1225	1295	570	726	129	4														
	H 5	1425	1495	1425	1495	670	926	229	-46														
MHM 5-16	H 3	1090	1175	1120	1175	495	806	25	67	130 ... 300	525	545	56	575 ... 405	690	200	470	32	155	310	160	60	12 (10)
	H 4	1310	1395	1340	1395	605	806	135	12														
	H 5	1530	1615	1560	1615	715	1026	245	-42														
MH 6-25	H 4	1330	1420	1365	1420	610	858	71	60	130 ... 300	550	635	71	615 ... 445	830	225	490	50	161	310	200	60	15 (13)
	H 5	1540	1630	1575	1630	715	974	176	7														
MH 7-40	H 4	1460	1495	-	-	675	1178	38	100	130 ... 300	575	775	71	800 ... 630	960	305	555	35	198	365	250	60	18 (15)
	H 5	1675	1710	-	-	785	1308	128	62														
	H 6	1990	1925	-	-	890	1408	236	8														
	H 7	2100	2135	-	-	995	1473	341	-44														

¹⁾ The data given in brackets are to be considered for wire ropes with high strength and smaller diameter.

Double rail trolley



REEVING	Type	Capacity, kg	General dimensions, mm																		
			L	L1				L2	B	B1	B2	B3	B4	B5	B6	H1	H2	b	D	h	
				without creep speed	with creep speed	without creep speed	with creep speed														
2/1, Fig. 1	MHM 4-10	2000	H 1	431	815	885	815	885	365	1000	650	184	40	480	-1	35	525	550	50	160	175
			H 2	541	925	995	925	995	420												
			H 3	641	1025	1095	1025	1095	470												
			H 4	841	1225	1295	1225	1295	570												
			H 5	1041	1425	1495	1425	1495	670												
	MHM 5-16	3200	H 2	461	860	945	890	945	380	1000	650	184	45	480	-3	35	525	620	50	160	175
			H 3	581	980	1065	1010	1065	440												
			H 4	691	1090	1175	1120	1175	495												
			H 5	911	1310	1395	1340	1395	605												
			H 6	1131	1530	1615	1560	1615	715												
	MH 6-25	5000	H 2	548	1015	1105	1050	1105	445	1000	760	220	50	480	1	38	590	710	50	160	175
			H 3	653	1120	1210	1155	1210	505												
			H 4	863	1330	1420	1365	1420	610												
			H 5	1073	1540	1630	1575	1630	715												
			H 6	1178	1645	1735	1680	1735	770												
	MH 7-40	8000	H 2	673	1140	1175	-	-	515	1200	900	270	56	760	-4	55	740	840	60	200	215
H 3			833	1300	1335	-	-	595													
H 4			993	1460	1495	-	-	675													
H 5			1108	1675	1710	-	-	785													
H 6			1423	1890	1925	-	-	890													
H 7			1633	2100	2135	-	-	995													
4/1, Fig. 2			MHM 4-10	4000	H 3	641	1025	1095	1025												
	H 4	814			1225	1295	1225	1295	570												
	H 5	1041			1425	1495	1425	1495	670												
	MHM 5-16	6300	H 3	691	1090	1175	1120	1175	495	1000	730	254	56	480	27	15	525	565	50	160	175
			H 4	911	1310	1395	1340	1395	605												
			H 5	1131	1530	1615	1560	1615	715												
	MH 6-25	10000	H 3	653	1120	1210	1155	1210	505	1000	850	309	71	480	23	14	590	695	50	160	175
			H 4	863	1330	1420	1365	1420	610												
			H 5	1073	1540	1630	1575	1630	715												
			H 6	1178	1645	1735	1680	1735	770												
	MH 7-40	16000	H 4	993	1460	1495	-	-	675	1200	1000	369	90	760	22	23	740	825	60	200	215
			H 5	1108	1675	1710	-	-	785												
			H 6	1423	1890	1925	-	-	890												
			H 7	1633	2100	2135	-	-	995												